

The logo consists of the letters 'H' and 'R' in a bold, white, sans-serif font. The 'H' is stylized with a vertical bar on its left side, and the 'R' has a thick vertical stem and a curved top.

ENGINEERING

ONE STOP INDUSTRIAL SOLUTIONS



ABOUT US

Hr Engineering is one stop industrial solutions in which we provide all types of electrical and mechanical products. We are leading distributors , dealers and stockiest of all types of industrial products.

In order to help businesses with planning, erection, installation, commissioning, audit, inspection, operation, and maintenance tasks, HR Engineering has set up a service center in each industrial park in India. through lectures, skill development initiatives, and technical training.

We carry out our work with highly qualified technicians, engineers, and supervisors. We employ supporting labor, electrical engineers, electrical supervisors, and electricians for our work.

Modern gear and equipment are used in HR Engineering's operations. The erection and commissioning activities are performed in accordance with the client's specifications by a team of highly qualified professional technicians and engineers.

Their tremendous market demand is partly attributed to the inexpensive cost of their services. The safety standards and erupotional quality of our erection operations have won accolades.





OUR MISSION

Our goal is to provide our clients with fresh, creative, flexible, affordable, and safe solutions and services that increase the usability of their assets while also being safe and ecologically friendly.

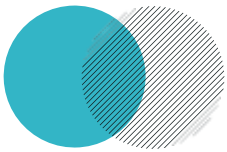
BETTER SUSTAINABILITY AND
THE END TO END SOLUTIONS



OUR VISION

Our goal is to create a company that defines standards in the engineering, manufacturing, and construction services sectors while keeping up with rapidly evolving technology, comprehending the needs and goals of our clients, and delivering goods and services to them efficiently and on schedule.

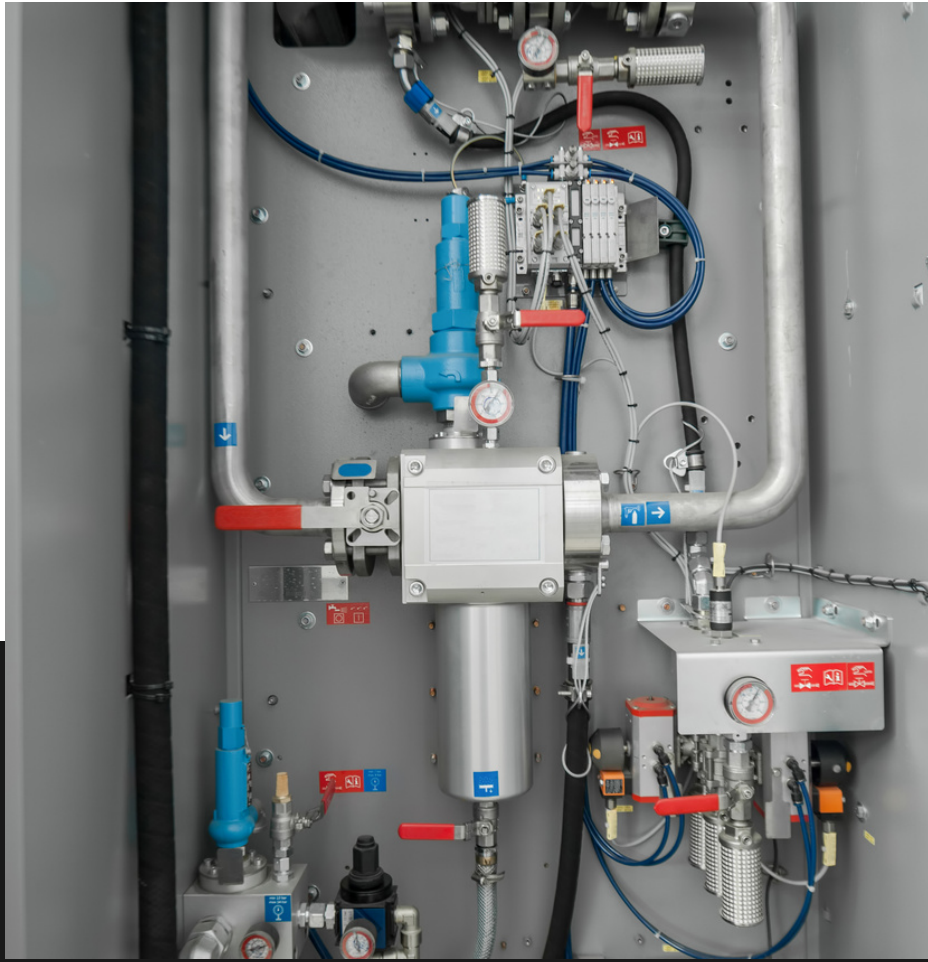




OUR CORE AREAS

We deliver highly impactful, innovative solutions across following core areas:

-  Safety
-  Integrity
-  Respect
-  Teamwork
-  Entrepreneurship



SUCCESS MANTRA

Our values have always come first. Our shared beliefs serve as the foundation for the actions we take to make a difference in the world. These ideas still guide the growth of businesses. Knowing the needs of the consumer, we understand that we have to act quickly so that others can put in their best effort.



SAFETY & ENVIRONMENTAL POLICY

For HR Engineering, health and safety have always come first, and it is ingrained in the company's basic values. The challenge of ensuring the safety of all the company's employees and contractors' personnel was never simple. However, the organization has succeeded thanks to tenacity, diligence, and the involvement of everyone, from top management to the base. A solid example of safe behavior is the company's effectiveness in maintaining a secure working environment in the Plant, Mine, and office spaces.

Every employee and anybody connected to the business must adhere to the company's basic safety policies. Personal Protective Equipment (PPE), holding hand rails, maintaining a clean and orderly home, refraining from taking shortcuts, etc. have been deemed to be requirements for everyone employed by the company. Serious accidents occurring in sponsor group facilities are simulated by the business so that staff members and contractors can learn from them and apply what they've learned to their respective work environments. The HR Engineering ultimate mission is to dominate the field of safety. To maintain the improvement in the area of safety, action plans have been established for each of the company's locations.

SAFETY COMMITMENT

Our staff and workers and their families are of principal importance for us. As a company we are dedicated to achieve safety superiority in our business. We have set in safety an essential part of business and we anticipate that each one of us, irrespective of functional area, shall bear by organisational safety policy and principals. We also understand that good safety is achieved only through continued commitment, practice and demand.

- ✔ Value and respect for safety system
- ✔ High level compliance to safety standards, rules and procedures.
- ✔ Safety as non negotiable aspect.
- ✔ Each and every individual working with the organisation shall contribute through responsible behaviour “on” and “off” the site
- ✔ We aim for zero fatality, zero injury and zero excuses.



OUR PRODUCTS

LV SWITCHGEARS

HT/LT & EHV CABLES & WIRES

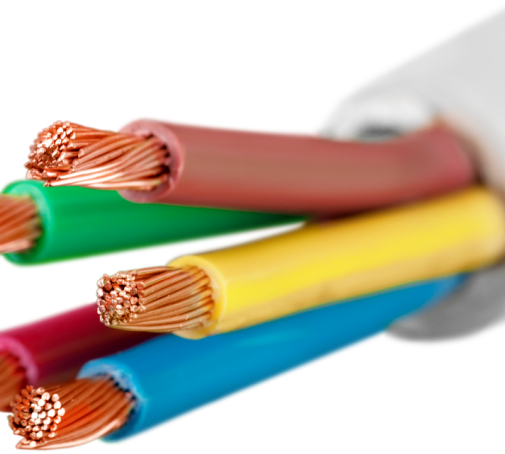
**INDUSTRIAL AND DOMESTIC INDUSTRIAL
PUMPS**

**INDUSTRIAL DOMESTIC FANS VC PIPES ND
ACCESSORIES**

ALL TYPES OF VALVES



OUR PRODUCTS



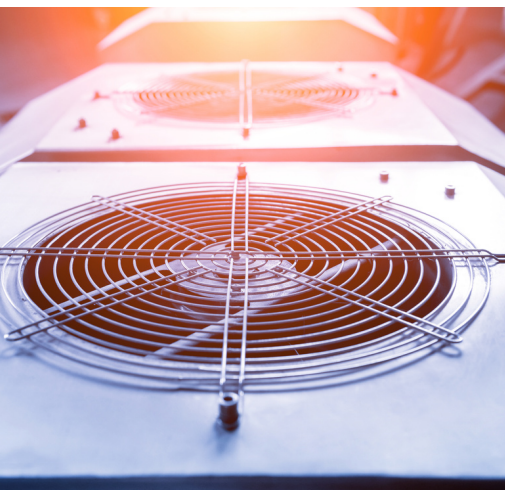
LT/HT & EHV
CABLES & WIRES



LT/HT & DC ELECTRIC
MOTORS



INDUSTRIAL &
DOMESTIC PUMPS



INDUSTRIAL &
DOMESTIC FANS



LIGHTING
LUMINARIES & POLES



PVC PIPES &
ACCESSORIES



MODULAR SWITCHES &
DOMESTIC



SWITCHEARS



DISTRIBUTION

- Valves & Automation
- Pumps & Automation
- Bearing & Mounted Products
- Precision Products
- Thermoplastic Product
- Pipe Fitting Products
- Instrumentation Products
- Air Compressor

DISTRIBUTION



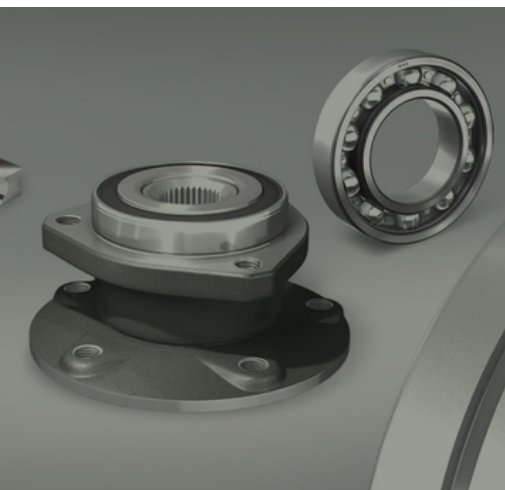
VALVES &
AUTOMATION



PUMPS &
AUTOMATION



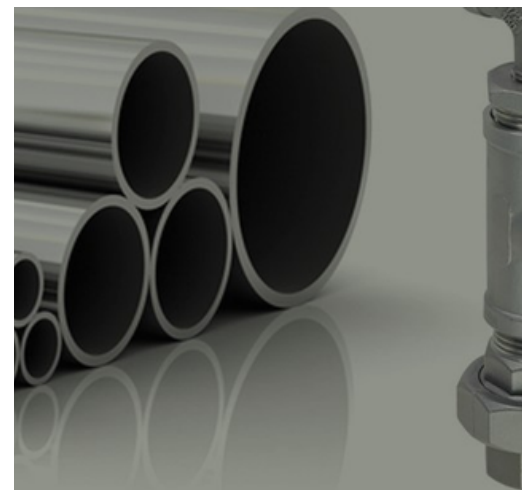
BEARING &
MOUNTED
PRODUCTS



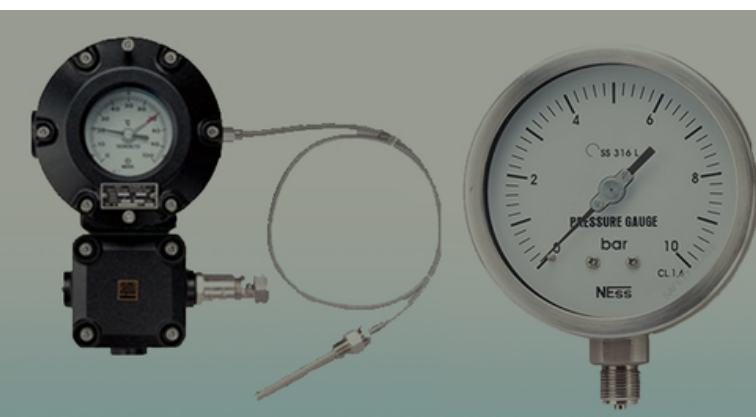
PRECISION
PRODUCTS



THERMOPLASTIC
PRODUCT



PIPE FITTING
PRODUCTS



INSTRUMENTATION
PRODUCTS



AIR COMPRESSOR



CONTACT US



info@hrengineerings.com



+91-9016224613



OPP HETARTH PARTY PLOT, SCIENCE CITY ROAD,
SOLA, AHMEDABAD



hrengineerings.com

THANK

YOU